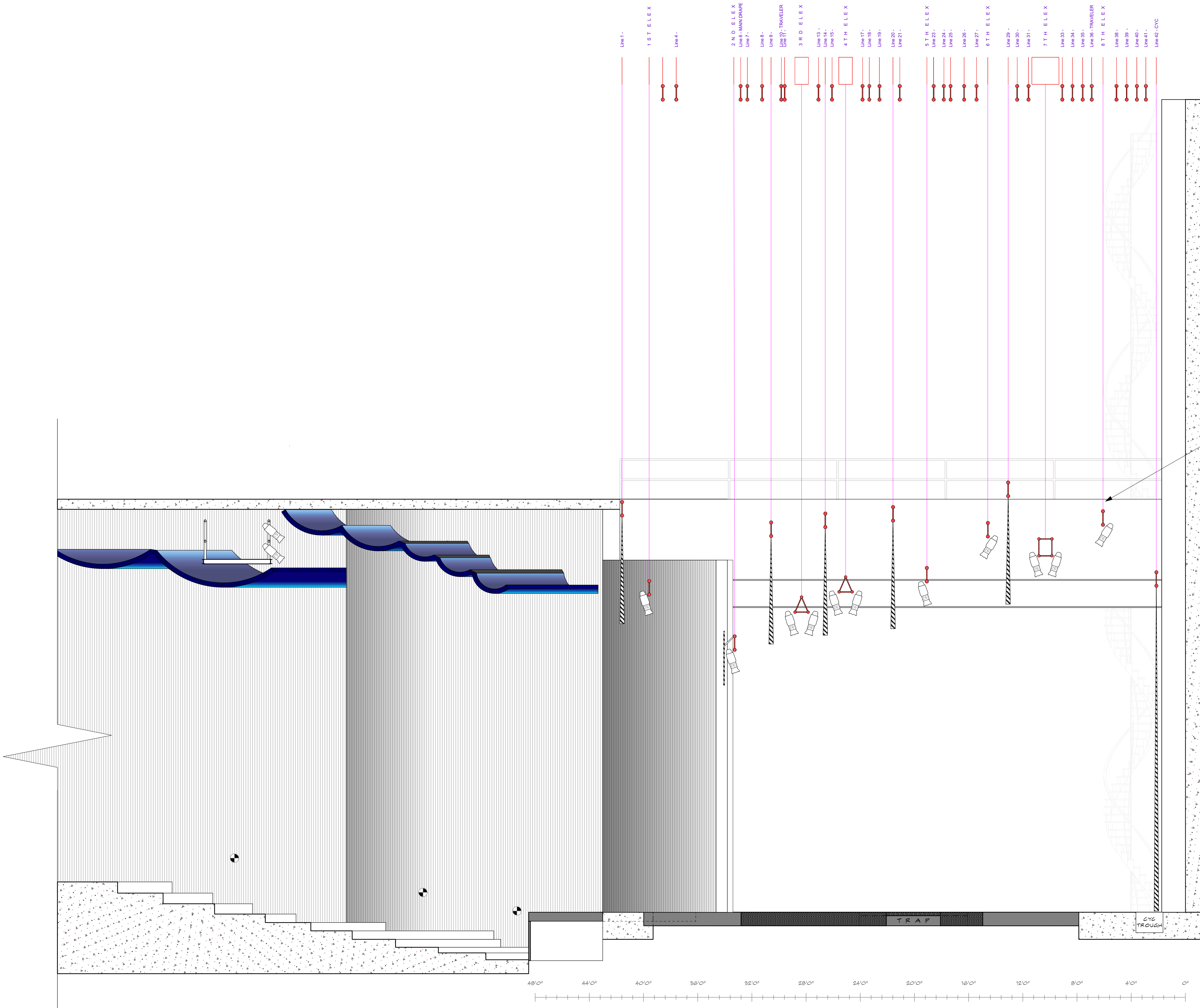


DIRECTOR: CINDY GENDRICH
SCENIC:
LIGHTS:
TECHNICAL:

T E D F O R D
S E C T I O N
DATE: 24 MAR 21 SCALE: 1/4" = 1'-0"

Silent Sky
AWAKEN
international scenic design competition



- SOFT GOODS INVENTORY**
- 1 BORDER @ 12' X 52' (0% FULLNESS)
 - 1 BORDER @ 16' X 52' (50% FULLNESS)
 - 2 BORDERS @ 8' X 52' (50% FULLNESS)
 - 1 BORDER @ 13'-6" X 52' (50% FULLNESS)
 - 6 LEGS @ 28' X 8' (50% FULLNESS)
 - 2 TRAVELERS @ 25' X 54' (0% FULLNESS)
 - 1 BLUE CYC/SKY DROP @ 25' X 54'
 - 1 NATURAL CYC/SKY DROP @ 25' X 54'
 - 1 BLACK SHARKTOOTH SCRIM @ 25' X 54'
 - 1 NATURAL SHARKTOOTH SCRIM @ 25' X 54'

ELECTRICS' LINESETS ARE FIXED BUT TRIM HEIGHT IS VARIABLE. SUGGESTION INDICATED ONLY. SOFT GOODS LOCATION IS A SUGGESTED LOCATION ONLY.